

# Capitol View Creations

## Creating a Pansy Pendant

I love pansies. To celebrate this happy flower, I designed this simple pendant. You can create a pendant that is a separate component to slip on a chain, or you can begin your necklace or bracelet by making a focal pansy and then stringing your beads on either side.



Created by Rose Allen

Copyright 2008. Capitol View Creations. All rights reserved.

For more information contact [rose@capitolviewconsulting.com](mailto:rose@capitolviewconsulting.com)  
or through my web site—[www.capitolviewconsulting.com/creations.html](http://www.capitolviewconsulting.com/creations.html)

# Creating a Pansy Pendant

## Materials:

7—4mm round beads (Czech Druks, fire polished crystals, etc.)  
4—4mm Bicone Swarovski Crystals  
13—#11 Delicas or seed beads  
.014 or .015— 49 strand flexible beading wire  
( 26” for a necklace, about 10” for just the pendant)

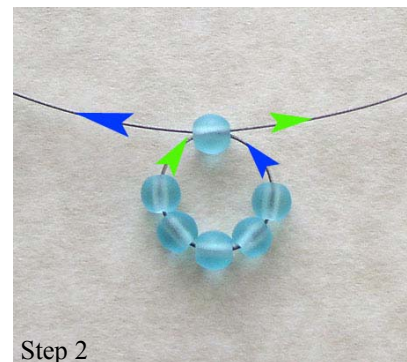
## Step 1

Take your strand of flexible beading wire and string on 5 of the 4mm beads. Move the beads to the middle of the wire.



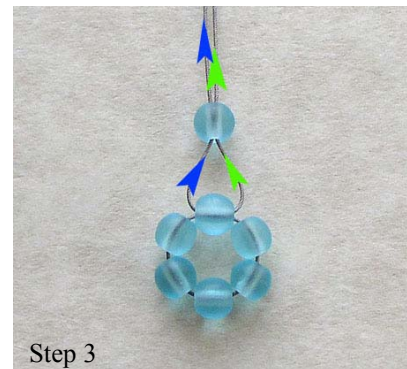
## Step 2

Add a 6th bead to the blue wire and run the green wire through the 6th bead from the opposite direction. Tighten into a circle that is centered on the wire.



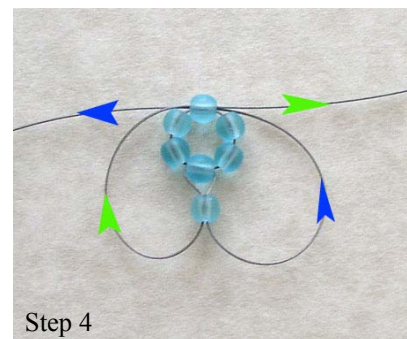
## Step 3

Add the 7th round bead by running both wires through it. Make sure the wires are not twisted.



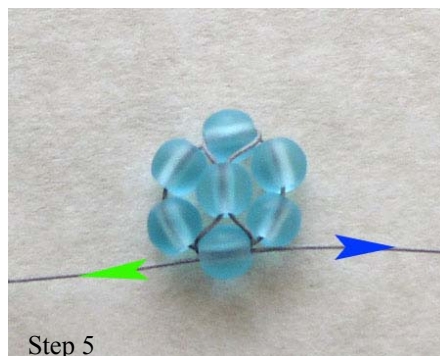
## Step 4

Run each wire through the bead opposite the 6th bead added to the wire. The blue wire travels from right to left through the bead, The green wire travels from left to right through the bead.



## Step 5

Tighten the wire so the 7th bead flips over and lies in the middle.



Created by Rose Allen

Copyright 2008. Capitol View Creations. All rights reserved.

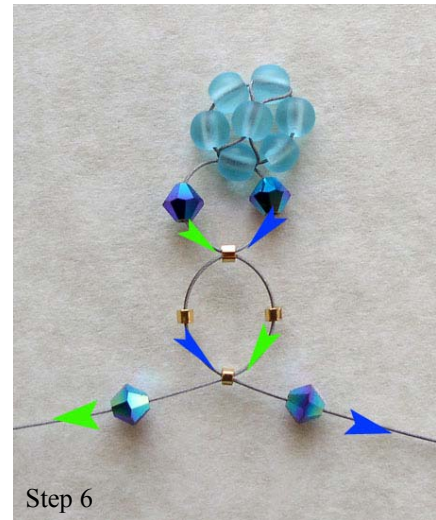
For more information contact [rose@capitolviewconsulting.com](mailto:rose@capitolviewconsulting.com)  
or through my web site—[www.capitolviewconsulting.com/creations.html](http://www.capitolviewconsulting.com/creations.html)

# Creating a Pansy Pendant

## Step 6

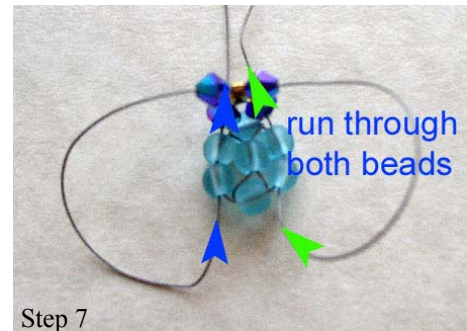
Now you will make the pansy.

- A) Add a 4mm crystal to the blue and the green wires
- B) String a #11 Delica or seed bead on the green wire and run the blue wire through the same bead from the opposite direction.
- C) Add a Delica or seed bead to the blue and the green wire.
- D) Repeat step B
- E) Repeat step A
- F) Tighten the beads and bring the pansy over the top of the background beads



## Step 7

Run the beading wire through the two side beads. This will secure the pansy and put the beading wire at the top of the pendant.



## Step 8

Create the top of the pendant by adding 4 #11 Delica or seed beads to each wire. Add a 5th bead to one of the wires and run the other wire through the same bead from the opposite direction.



## Step 9

Tighten the pendant top and your Pansy is complete. Now you can string the rest of the necklace using the coordinating beads. If this will be a separate pendant, you can attach a jump ring for a chain to go through.



Created by Rose Allen  
Copyright 2008. Capitol View Creations. All rights reserved.

For more information contact [rose@capitolviewconsulting.com](mailto:rose@capitolviewconsulting.com)  
or through my web site—[www.capitolviewconsulting.com/creations.html](http://www.capitolviewconsulting.com/creations.html)